

Covid-19 information pack for primary, secondary and special schools

Lambeth Public Health, 31 August 2021

The information in these slides was correct as of 31/08/21. COVID-19 prevention and management is a rapidly evolving area and guidance is subject to change. Please always refer to latest guidance

Purpose

- To summarise key points from published guidance of relevance to schools in a single document
- To signpost to full guidance
- To have a quick reference for settings to know what to do when they have a case, or multiple cases

Key guidance documents

[Schools COVID-19 operational guidance - GOV.UK \(www.gov.uk\)](https://www.gov.uk)

[Managing coronavirus \(COVID-19\) in education and childcare settings - GOV.UK \(www.gov.uk\)](https://www.gov.uk) (Contingency framework)

An updated LCRC schools resource pack is expected and will be shared as soon as it is available

Response to Covid 19 Case in Education & Childcare Settings

Education or Childcare Setting

Public Health Team

Individual/Family

Positive Covid 19 Test

In School
2 days before symptoms onset/Test date to 10 days after

YES

Threshold Met

YES

Call DfE helpline
0800 0468687

Review and reinforce testing, hygiene and ventilation measures

Inform PH team using Tracker tool (annex) to PublicHealth@lambeth.gov.uk Or call 0207 9262900

Close contacts to be identified and informed by NHS Test & Trace.

NO

Share information about Support for self-isolation with family

NO

Inform PH team using Tracker tool (annex) to PublicHealth@lambeth.gov.uk Or call 0207 9262900

Letter A to school community

Letter B to school Community

Contact tracing informed of case attends setting

Inform Setting by phone or email

PH Team review situation and potential additional measures working with the setting

Individuals to isolate for 10 days. If LFD test, must take confirmatory PCR within 2 days (those with negative PCR can end self isolation)

Thresholds

- 5 pupils or staff, who are likely to have mixed closely, test positive for COVID-19 within a 10-day period
- 10% of pupils or staff who are likely to have mixed closely test positive for COVID-19 within a 10-day period

For special schools and any settings that operate with 20 or fewer children, pupils, students and staff at any one time:

- 2 children, pupils, students and staff, who are likely to have mixed closely, test positive for COVID-19 within a 10-day period

What to do if someone becomes unwell on site

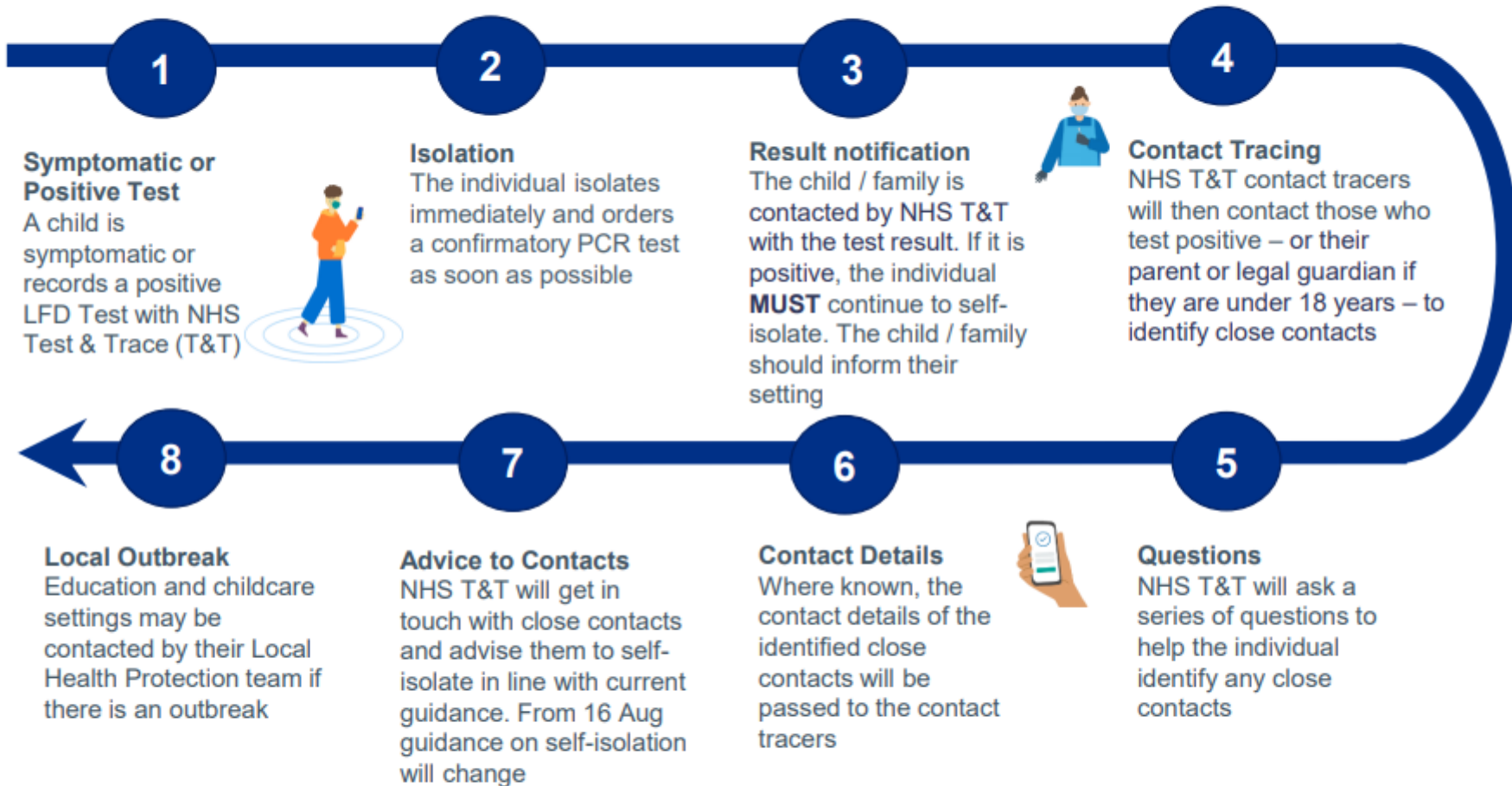
Immediate actions

- If anyone in your setting develops symptoms that could be Covid-19 ([COVID-19 symptoms](#)):
 - you should send them home and they should follow [guidance for households with possible or confirmed coronavirus \(COVID-19\) infection](#) .
 - They should avoid using public transport and, wherever possible, be collected by a member of their family or household
 - advise them to [arrange to have a test](#) to see if they have coronavirus (COVID-19). They should have a test as soon as possible (a test can be done in the first 8 days of having symptoms).
- If a child in your setting displays symptoms and is awaiting collection, they should:
 - be left in a room on their own if possible and safe to do so. A window should be opened for fresh air ventilation if possible.
 - PPE should be worn by staff caring for the child while they await collection if a distance of 2 metres cannot be maintained.
- In an emergency, call 999 if someone is seriously ill or injured or their life is at risk.
- Everyone must wash their hands thoroughly for 20 seconds with soap and running water or use hand sanitiser after any contact with someone who has symptoms.
- Any rooms the person with symptoms uses should be cleaned after they have left. See [COVID-19: cleaning of non-healthcare settings guidance](#).

Contact Tracing Journey

For children and young people in education and childcare settings

IMPORTANT: If, at any point, a student, pupil or staff member begins displaying symptoms they must [follow government guidelines](#), order a [PCR test](#) and self-isolate.



Signpost to other advice:

- Support if you're off work while self-isolating: <https://bit.ly/isolatesupport>
- If you're worried about your health, visit <https://www.nhs.uk/> or call 111.
- Remote learning advice: <https://bit.ly/covidhomelearning>
- [Printable action list](#) for schools/colleges for children with symptoms

Testing and isolating

Staff and pupils should not take a PCR test if they have previously had a positive PCR test result in the last 90 days unless they develop any new symptoms of COVID.

- Students in secondary schools and colleges should be tested twice on site at an Asymptomatic Testing Site (ATS) on return in the autumn term. The tests should be 3-5 days apart.
- Settings may commence testing from 3 working days before the start of term and can stagger return of pupils across the first week.
- Cases identified in the test-on-return period should not trigger escalation as they are unlikely to have acquired their infection in the setting.
- Thereafter, staff and students in secondary schools and colleges, and staff in primary schools, should test themselves using LFD twice a week at home until the end of September, when this will be reviewed.
- All early years and wraparound childcare staff should also continue to test twice weekly
- Those who test positive should isolate, take a confirmatory PCR test, and continue to isolate if the result is positive.
- Individuals are not required to self-isolate if they live in the same household as someone with COVID-19, or are a close contact of someone with COVID-19, and any of the following apply:
 - they are fully vaccinated
 - they are below the age of 18 years and 6 months
 - they have taken part in or are currently part of an approved COVID-19 vaccine trial
 - they are not able to get vaccinated for medical reasons
- Instead, they will be contacted by NHS Test and Trace, informed they have been in close contact with a positive case and advised to take a PCR test and, if positive, will need to isolate.

Help with isolating Anyone needing financial, practical or emotional support (e.g. for food or medicines) can contact their local authority for help. Lambeth residents can call 0800 054 1215, 9am to 5pm, 7 days a week. Or visit [Advice and help to self-isolate | Lambeth Council](#)

How to get covid tests for a setting

Please see [google shared drive for useful resources on ordering test kits and any queries about testing](#)

[Resources- Further Education & Secondary Schools - Google Drive](#)

[Early Years and Primary Schools Document Sharing Platform - Google Drive](#)

- For any queries or issues with the supply, ordering or delivery of test kits, please contact NHS Test and Trace on 119 for further support and advice. The helpline is open 7:00am till 11:00pm Monday to Sunday.
- Information on delivery schedules and refreshed guidance is now available on the school/college document sharing platform. If a setting doesn't have access to the document sharing platform, they should contact the DfE helpline 0800 0468687.
- If you wish to reorder test kits the reordering service can be accessed at: request-testing.test-for-coronavirus.service.gov.uk
- For all other enquiries about the rapid testing programme in education, please contact the DfE Coronavirus Helpline on 0800 046 8687. The helpline is open 8:00am till 6:00pm Monday through to Friday, and 10:00am till 6:00pm on Saturdays and Sundays.

Outbreak Management Plans / Contingency Plans

[Managing coronavirus \(COVID-19\) in education and childcare settings - GOV.UK \(www.gov.uk\)](https://www.gov.uk/guidance/managing-coronavirus-covid-19-in-education-and-childcare-settings)

- Schools should have plans describing what they would do if children, pupils, students or staff test positive for COVID-19, or how they would operate if they were advised to reintroduce any covid infection control measures help break chains of transmission.
- No need to reformat existing plans, but plans should be kept up to date and should cover:
 - Roles and responsibilities
 - when and how to seek public health advice
 - details on the types of control measures you might be asked to put in place
 - How you would implement these measures ensuring all children have access to quality education and support
 - How you would communicate changes to the school community
- Guidance describes thresholds for taking extra action, as an indication of transmission within the setting.

Thresholds for review of measures and to seek public health advice

For most education and childcare settings

- 5 children, pupils, students or staff, who are likely to have mixed closely*, test positive for COVID-19 within a 10-day period; or
- 10% of children, pupils, students or staff who are likely to have mixed closely* test positive for COVID-19 within a 10-day period

For special schools, residential settings, and settings that operate with 20 or fewer children, pupils, students and staff at any one time:

- 2 children, pupils, students and staff, who are likely to have mixed closely*, test positive for COVID-19 within a 10-day period

All settings should seek public health advice if a pupil, student, child or staff member is admitted to hospital with COVID-19. Please call the DfE helpline (0800 046 8687, option 1), and Lambeth public health on 0207 926 2900 or publichealth@lambeth.gov.uk

*Examples include:

- a childminder minding children, including their own or a group of childminders working together on the same site
- a nursery class
- a friendship group
- staff and children taking part in the same activity session together
- a form group or subject class
- a sports team
- a group in an after-school activity

What to do when a threshold is met

- School should review and reinforce the testing, hygiene and ventilation measures in place including:
 - whether any activities could take place outdoors, including exercise, assemblies, or classes
 - ways to improve ventilation indoors, where this would not significantly impact thermal comfort
 - one-off enhanced cleaning focussing on touch points and any shared equipment
- Guidance states that settings may wish to seek additional public health advice if they are concerned about transmission in the setting, either by phoning the DfE helpline (0800 046 8687, option 1) or in line with other local arrangements.
- Lambeth public health advises settings to **both** phone DfE helpline (this will escalate to LCRC if needed) and inform Lambeth public health
- Public health (LCRC or Lambeth team) may advise further measures

Employers

- For all cases relating to staff, please also see the [guidance for workplaces: NHS Test and Trace in the workplace](#)
- Employers should call the Self-Isolation Service Hub on 020 3743 6715 as soon as they are made aware that any of their workers have tested positive.
- Employer should providing the 8 digit Test and Trace account ID (CTAS reference) of staff who test positive, and a list of staff who are close contacts,
- This will ensure that all workplace contacts are registered with NHS Test and Trace and can receive the necessary public health advice, including the support available to help people to self-isolate.
- If one of your workers is told to self-isolate by NHS Test and Trace and is due to work somewhere other than their place of self-isolation, they have a legal duty to inform you as soon as possible before they are next due to work.
- Workers do not need to inform you if they are a contact of a positive case but exempt from self-isolation. Employers are not expected to check whether an individual is exempt from self-isolation.
- Workers also do not need to inform employers if they have received a contact notification and advice from the NHS COVID-19 app.
- Those contacts who are exempt from self-isolation from 16 August will still be advised to take a PCR test, but will not be required to self-isolate while they wait for the result.

Support for families



Stay home safely

Do you or someone you are caring for need to self-isolate due to Covid-19?



Lambeth Stay Home Support Payment

Up to £738 for Lambeth residents who will lose earnings or potential work from self-isolating or caring for someone who is self-isolating.

▶ lambeth.gov.uk/self-isolate-help



Stay home safely support service

Help with needs such as grocery delivery, dog walking or emotional support, and accommodation advice – for any Lambeth residents who have to self-isolate.

▶ **Call free on 0800 054 1215**

The setting should ensure staff, parents and carers know what to do

- if they get symptoms
- if someone in their household gets symptoms
- if they are asked to self-isolate by NHS Test & Trace

If any Lambeth residents need financial, emotional or practical support, please share details of the Stay Home Safely service

You will find further details of this support offer at <https://beta.lambeth.gov.uk/coronavirus-covid-19/help-residents/advice-help-self-isolate>

Who can have a Covid vaccine?

People aged 18 and over (or will turn 18 within 3 months)

- Can [book online](#) or call 119 for an appointment at a vaccination centre or pharmacy
- Can [find a walk-in clinic](#) to get vaccinated without needing an appointment
- Can follow up with their GP surgery and book an appointment with them

Young people aged 16 and 17

- The first dose of the Pfizer-BioNTech vaccine is now available to all 16 and 17 year olds nationwide. Second dosage timings remain under review and you will be updated in due course
- Parental consent is not required provided that the young person has capacity
- In south east London, young people aged 16 and 17 years can get a vaccine in one of two ways:
 - By attending a [grab-a-jab walk-in clinic](#) (no appointment required)
 - Through a direct invitation to book from a healthcare provider

Some children aged 12 to 15

Children aged 12 to 15 can get vaccinated against COVID-19 if:

- they live with someone who is more likely to get infections (such as someone who has HIV, has had a transplant or is having certain treatments for cancer, lupus or rheumatoid arthritis)
- they have a condition that means they're at high risk from COVID-19:
 - a severe problem with the brain or nerves, such as cerebral palsy
 - Down's syndrome
 - severe or multiple learning disabilities (or they're on the learning disability register)
 - a condition that means they're more likely to get infections (such as some genetic conditions or types of cancer)
- If a child is eligible for vaccination, parents will be contacted by a local NHS service such as their GP surgery to arrange their appointments.
- There has been no decision made about a wider vaccination roll-out for 12 to 15 year olds. This remains under review and you'll be updated in due course.

How can I support vaccine uptake?

With staff:

- Where appropriate and possible, please encourage staff to take-up vaccination
- Direct people [online](#) to trusted FAQs, including those focused on pregnancy
- Any vaccinated staff must still follow measures to reduce transmission, including taking part in regular asymptomatic testing

With pupils / students:

- Although some vaccination sites operate outside of teaching hours, booked appointments may fall within the teaching week - please support take-up
- Side-effects of the vaccination will vary – you can find further details [online](#) to help familiarise yourself with them
- By distributing flyers to young people aged 16 to 17 at your school, college or organisation

With parents:

- A letter is available to go out to parents and carers of 16 to 18 year olds. Any support with distributing this letter to parents and carers of young people in this age group enrolled at your institution is appreciated

Useful resources

[Schools COVID-19 operational guidance - GOV.UK \(www.gov.uk\)](https://www.gov.uk/guidance/schools-covid-19-operational-guidance)

[Managing coronavirus \(COVID-19\) in education and childcare settings - GOV.UK \(www.gov.uk\)](https://www.gov.uk/guidance/managing-coronavirus-covid-19-in-education-and-childcare-settings)
(Contingency framework)

[Guidance on cleaning](#)

[Resources- Further Education & Secondary Schools - Google Drive](#)

[Early Years and Primary Schools Document Sharing Platform - Google Drive](#)

Resources for your staff, setting and families

- NHS coronavirus [homepage](#)
- NHS website with easy to follow instructions/FAQs on [NHS Test & Trace](#) including how to get a test
- NHS Test & Trace: how it works [guidance](#)
- [NHS Vaccine Facts | Home](#) including answers to common questions about the vaccine and latest info on where people across South East London can get a vaccine, including pop-up sites

Useful contact details

Lambeth public health team:

publichealth@lambeth.gov.uk and 020 7926 2900

Department for Education helpline

0800 046 8687

Questions about the supply, ordering or delivery of test kits

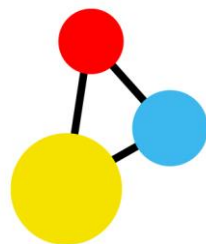
contact NHS Test and Trace on 119

Annex

Case initials	Staff or pupil?	Symptom onset date (if applicable)	Date of LFD test (if applicable)	Date of PCR test (if applicable)	Date last in school	Any known links with other cases in setting (e.g. same class, friendship group had planning meeting, share office, share staff room)

Please complete this table (Word version to be circulated with this pack) and send to publichealth@lambeth.gov.uk when reporting any cases up to threshold

Please email the Public Health Team
on PublicHealth@lambeth.gov.uk
with any questions about these slides



**KEEP
LAMBETH
SAFE**